

Flasks

Erlenmeyer Flasks, PP No more broken flasks

- Polypropylene (PP) flasks are ideal for general laboratory applications
- 2000-mL flasks have molded-in graduations that won't wear off
- Autoclavable



Erlenmeyer flask 06109-40 shown with vinyl-covered lead ring weight 06137-02 (sold separately below).

Capacity		Accepts stopper no.	Catalog number	Qty/pk	Price/pk
mL	oz				
250	8	6	GY-06109-30	6	
500	16	7	GY-06109-40	4	
1000	32	8	GY-06109-50	2	
2000	64	10	GY-06109-60	2	

Brand 4980 Erlenmeyer Flasks Get tight storage with heavy-duty rim

- Durable white enamel graduations won't rub off
- Easily identify contents with large marking area



Cap. (mL)	Graduation range (mL)	Catalog number	Qty/pk	Price/pk
25	10 to 25	GY-34503-02	12	
50	20 to 50	GY-34503-03	12	
125	50 to 125	GY-34503-04	12	
250	50 to 200	GY-34503-05	12	
300	100 to 300	GY-34503-06	12	
500	100 to 500	GY-34503-07	6	
1000	250 to 1000	GY-34503-08	6	
2000	600 to 1800	GY-34503-09	1	
4000	1000 to 4000	GY-34503-10	1	
6000	1500 to 6000	GY-34503-11	1	

Erlenmeyer Flasks, PC and FEP No more leaks or contaminants

- Get good clarity and strength with polycarbonate flasks, include PP screw closure
- Get great chemical resistance from FEP flasks, include ETFE screw enclosure
- FEP version withstands temperatures from -454 to 401°F (-270 to 205°C)
- All flasks are autoclavable



Capacity		Closure (mm)	Catalog number	Qty/pk	Price/pk
mL	oz				
Polycarbonate (PC) flasks with polypropylene screw closure					
125	4	33	GY-06112-52	6	
250	8	38	GY-06112-53	4	
500	16	43	GY-06112-54	4	
FEP flasks with Tefzel® ETFE screw closure					
125	4	33	GY-06113-83	1	
250	8	38	GY-06113-84		

Brand 4985 Screw-Cap Erlenmeyer Flasks Don't risk leaking samples

- Store and mix with confidence with included phenolic cap
- Caps include steam-resistant inert white rubber liner
- Enamel graduations for better visibility
- Case quantities also available

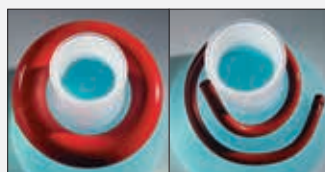


Capacity		Grad. range (mL)	Grad. (mL)	Thread finish (GPI)	Catalog number	Qty/pk	Price/pk
mL	oz						
50	1 3/4	20 to 50	10	24-410	GY-34554-01	12	
125	4	50 to 125	25	24-410	GY-34554-02	12	
250	8	50 to 200	25	38-430M	GY-34554-03	6	
500	16	100 to 500	50	38-430M	GY-34554-04	6	
1000	32	250 to 1000	50	38-430M	GY-34554-05	6	

Vinyl-Covered Lead Weights

Keep your flasks in place

Use these lead weights to stabilize flasks where they might float, spill, or break. Bright red vinyl covering resists chemicals and will not scratch flask.



Fits flask size	Size (inner dia)		Weight		Catalog number	Price/ea
	in.	cm	oz	g		
Vinyl-covered lead ring weights						
125 to 500 mL	1 7/8	4.8	8	227	GY-06137-00	
250 to 1000 mL	2 3/16	5.6	16	454	GY-06137-02	
500 to 2000 mL	2 3/8	6.0	24	680	GY-06137-04	
1000 to 4000 mL	2 7/8	7.3	32	907	GY-06137-06	
Flexible vinyl-covered lead wire weight						
Adjustable	12" (30.5 cm) L x 1/2" (1.3 cm) thick		4.8	136	GY-67971-00	

Brand 4995 Screw-Cap Erlenmeyer Flasks

No more struggling to sample

- Wider (29-mm) neck opening to accommodate larger pipettes
- Idea for culture prep or general storage
- Convert to vented culture flask with optional membrane cap



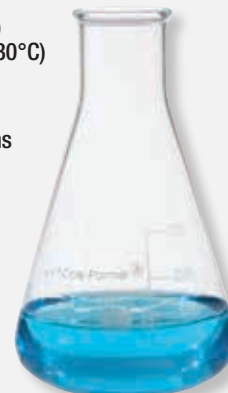
Capacity mL	Graduation range (mL)	Approximate neck (OD x height)	Catalog number	Qty/cs	Price/cs
250	50 to 200	81 x 140 mm	GY-34555-21	6	
500	100 to 500	102 x 185 mm	GY-34555-22	6	
1000	200 to 1000	128 x 225 mm	GY-34555-23	6	
2000	600 to 1800	160 x 268 mm	GY-34555-24	1	
4000	1000 to 4000	206 x 335 mm	GY-34555-25	1	
6000	1500 to 6000	235 x 395 mm	GY-34555-26	1	
Optional membrane cap			GY-34514-54	10	

Cole-Parmer® Class A Glass Erlenmeyer Flasks

Don't break the bank

NEW

- Easy reading, white enamel graduations
- Stands up to the heat—752°F (400°C) for short-term exposure and 445°F (230°C) for long-term exposure
- Class A borosilicate glass meets ASTM E 1404, DIN 12380 specifications
- Autoclavable



Cole-Parmer®

Capacity mL	Stopper no.	Graduation range (mL)	Graduation (mL)	Catalog number	Qty/pk	Price/pk
100	5	50 to 100	25	GY-34506-10	12	
250	6	50 to 200	25	GY-34506-12	12	
500	7	100 to 500	50	GY-34506-14	6	
1000	9	250 to 1000	50	GY-34506-16	6	
2000	10	600 to 1900	100	GY-34506-18	1	
3000	10	1000 to 3000	500	GY-34506-20	1	

Brand 5020 Stoppered Erlenmeyer Flasks

Won't let samples evaporate

- ⚙ stopper fits snugly to keep contents inside
- Know your content volume with white graduations
- Case quantities also available

Capacity		Stopper number	Graduations (mL)	Catalog number	Qty/pk	Price/pk
mL	oz					
25	¾	16	5	GY-34554-30	6	
50	1¾	19	10	GY-34554-32	6	
125	4	22	25	GY-34554-34	6	
250	8	27	25	GY-34554-36	6	
500	16	32	50	GY-34554-38	1	
1000	32	32	50	GY-34554-40	1	



Safety-Coated Erlenmeyer Flasks

Protect against shattered glass

- Plastic coating provides added safety
- Feature a large opening and GL 45 threaded closure for easy pouring and tight sealing
- Blue caps and clear pour rings are included
- Autoclavable to 120°C (250°F)

Capacity		Graduation range (mL)	GPI thread finish	Catalog number	Qty/cs	Price/cs
mL	oz					
250	8	50 to 225	45	GY-34524-41	6	
500	16	100 to 500		GY-34524-43	6	
1000	32	250 to 1000		GY-34524-45	4	
2000	64	600 to 2000		GY-34524-46	2	

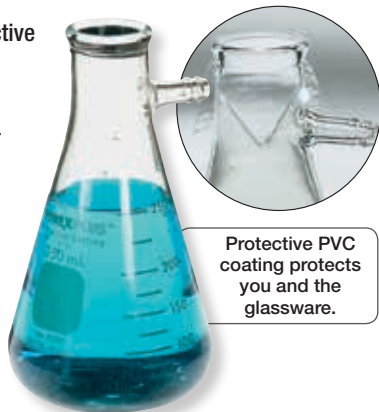


Flasks

Brand 65340 Filtering Flasks

Put safety first—no more shattered glass

- Get longer life with protective PVC coating
- Resists thermal shock
- Easy tubing connection—10 mm OD on sizes to 1000 mL, 12.5 mm on 2000- and 4000-mL sizes
- Autoclavable



Protective PVC coating protects you and the glassware.

Capacity (mL)	Stopper no.	Graduation range (mL)	Graduations (mL)	Catalog number	Qty/ cs	Price/ cs
250	6	75 to 250	25	GY-34577-21	6	
500	7	150 to 500	50	GY-34577-22	6	
1000	8	300 to 1000	50	GY-34577-23	6	
2000	9	600 to 2000	200	GY-34577-24	4	
4000	12	1500 to 4000	500	GY-34577-25	2	

Accessories

[GY-06414-30](#) Tygon® vacuum tubing, 3/8" ID (for 10-mm tubulation). 10 ft (3 m)

[GY-06414-40](#) Tygon vacuum tubing, 1/2" ID (for 12.5-mm tubulation). 10 ft (3 m)

Brand 5340 Filtering Flasks

Get maximum performance and durability

- Heavy-wall flasks have maximum mechanical strength
- Graduated for approximate measurements
- Use 10 mm OD tubing for flasks to 1000 mL; 12.5 mm OD for 2000- and 4000-mL sizes
- Case quantities also available



Capacity (mL)	Stopper no.	Graduation range (mL)	Grad. (mL)	Catalog number	Qty/ pk	Price/ pk
250	6	75 to 250	25	GY-34557-01	6	
500	7	150 to 500	50	GY-34557-02	6	
1000	8	300 to 1000	50	GY-34557-03	6	
2000	9	600 to 2000	200	GY-34557-04	1	
4000	12	1500 to 4000	500	GY-34557-05	1	

Accessories

[GY-06414-20](#) Tygon® vacuum tubing, 3/8" ID (for 10-mm tubulation). 10 ft (3 m)

[GY-06414-30](#) Tygon vacuum tubing, 1/2" ID (for 12.5-mm tubulation). 10 ft (3 m)

Filtering Flasks, PP

Minimize tipping

- Prevent tipping with 45° angle on side arm
- Withstands vacuum to 30" Hg
- Autoclavable



Capacity		Accepts stopper no.	Catalog number	Qty/ pk	Price/pk
mL	oz				
500	16	7	GY-06110-10	1	
1000	32	8	GY-06110-20		
2000	64	10	GY-06110-30		

Accessories

[GY-06414-20](#) Tygon® vacuum tubing, 1/4" ID (for 6.5-mm tubulation). 10 ft (3 m)

[GY-06414-30](#) Tygon vacuum tubing, 3/8" ID (for 110-mm tubulation). 10 ft (3 m)

Wait! There's More...

Stoppers, see pages 897–899.

Filtering Flasks

Heavy wall for vacuum to 29" Hg

- Use in temperatures up to 840°F (450°C)
- Attach tubing with OD of 5/16" to 25- to 500-mL flasks; 3/8" OD on flasks 1000- to 4000-mL



Capacity (mL)	Graduation range (mL)	Graduation (mL)	Stopper number	Catalog number	Qty/ cs	Price/ cs
25	5 to 25	5	3	GY-34524-30	18	
50	20 to 50	10	4	GY-34524-32	18	
125	50 to 125	25	5	GY-34524-34	18	
500	150 to 500	50	7	GY-34524-38	18	
1000	300 to 1000	50	8	GY-34524-40	12	
2000	600 to 2000	100	9	GY-34524-42	12	
4000	1500 to 4000	250	12	GY-34524-44	6	

Accessories

[GY-06414-20](#) Tygon® vacuum tubing, 1/4" ID (6.5-mm tubulation). 10 ft (3 m)

[GY-06414-30](#) Tygon vacuum tubing, 3/8" ID (10-mm tubulation). 10 ft (3 m)

Safety-Coated Filtering Flasks

No more cleaning up broken glass

- Plastic coating keeps broken glass from going all over
- Side arm provides 1/4" connection for vacuum filtration
- Autoclavable to 120°C (250°F)



Capacity		Accepts stopper size	Hose connection	Catalog number	Qty/cs	Price/cs
mL	oz					
125	4	5	#2	GY-34524-49	1	
1000	32	8		GY-34524-51		
2000	64	8		GY-34524-53		
4000	128	8		GY-34524-55		

Baffled Shaker Flasks

Don't struggle with clamps

- Baffled sides fit securely into shaker clamps
- Get better oxygen transfer and aeration of samples
- No graduations
- Compliance: ASTM E, Type I, Class I; Type II, Class I



Capacity		Approximate neck OD	Base diameter	Catalog number	Qty/cs	Price/cs
mL	oz					
125	4	25 mm	66 mm	GY-34524-00	6	
250	8	38 mm	82 mm	GY-34524-02	6	
500	16	38 mm	102 mm	GY-34524-04	6	
1000	32	38 mm	128 mm	GY-34524-06	6	
2000	64	38 mm	161 mm	GY-34524-08	6	

Volumetric Flasks, PP

Won't leak upon inverting

- Get better accuracy in dilutions—calibrated individually TC/TD at 20°C
- Feature no meniscus design
- 200-mL version has extra graduation at 203-mL for BOD and DO determinations
- Autoclavable



Capacity		Error limit	Catalog number	Qty/pk	Price/pk
mL	oz				
50	1 3/4	±0.10 mL	GY-06108-10	1	
100	3	±0.16 mL	GY-06108-20		
200	7	±0.20 mL	GY-06108-30		
250	8	±0.24 mL	GY-06108-40		
500	16	±0.40 mL	GY-06108-50	1	
1000	32	±0.60 mL	GY-06108-60		

Brand 5640 Volumetric Flasks

Get accurate dilutions

- Sharp, permanent graduation makes for easier diluting
- Durable, Class A design for longer life
- Easy-to-read white inscriptions
- More sizes and case quantities available



Capacity (mL)	Tolerance (±mL)	Stopper no.	Catalog number	Qty/pk	Price/pk
25	0.03	9	GY-34505-05	6	
50	0.05	9	GY-34505-06	6	
100	0.08	13	GY-34505-07	6	
200	0.10	13	GY-34505-08	6	
250	0.12	16	GY-34505-09	6	
500	0.20	19	GY-34505-10	6	
1000	0.30	22	GY-34505-11	1	
2000	0.50	27	GY-34505-12	1	

DON'T RISK IT!

Our chemical compatibility database provides important information on chemical resistance—check it out at ColeParmer.com/ChemChart



Colorware Volumetric Flasks

Quickly identify flasks and samples

- Color-coded graduations provide easier identification
- Get better accuracy with Class A flasks that are calibrated “to contain”
- Graduation won’t wear off—blasted on neck for longer life
- Meet ASTM E 288, Class A unserialized specifications



Capacity (mL)	Tolerance (±mL)	Stopper no.	Qty/pk	Blue-coded flasks		Green-coded flasks		Red-coded flasks		Yellow-coded flasks	
				Cat. no.	Price/pk	Cat. no.	Price/pk	Cat. no.	Price/pk	Cat. no.	Price/pk
25	0.03	9	6	GY-34562-30		GY-34562-10		GY-34562-50		GY-34562-70	
50	0.05	9	6	GY-34562-32		GY-34562-12		GY-34562-52		GY-34562-72	
100	0.08	13	6	GY-34562-34		GY-34562-14		GY-34562-54		GY-34562-74	
250	0.12	16	6	GY-34562-36		GY-34562-16		GY-34562-56		GY-34562-76	
500	0.20	19	6	GY-34562-38		GY-34562-18		GY-34562-58		GY-34562-78	
1000	0.30	22	1	GY-34562-40		GY-34562-20		GY-34562-60		GY-34562-80	

‡ Symbol used to designate interchangeable joints, stoppers, and stopcocks that comply with the requirements of Commercial Standard CS-21 published by NIST.

Brand 5580 Volumetric Flasks

Easy and accurate dilutions—sharp line for precise volume

- Durable construction for repeated use
- Class A glassware
- Snap caps included on 10- to 2000-mL sizes



Capacity (mL)	Tolerance (±mL)	Catalog number	Qty/pk	Price/pk	Catalog number	Qty/cs	Price/cs
1	0.01	GY-34560-01	6		GY-34560-21	12	
2	0.015	GY-34560-02	6		GY-34560-22	12	
10	0.02	—	—	—	GY-34560-24	12	
25	0.03	GY-34560-05	6		GY-34560-25	12	
50	0.05	GY-34560-06	6		GY-34560-26	12	
100	0.08	GY-34560-07	6		GY-34560-27	12	
200	0.10	GY-34560-08	6		GY-34560-28	12	
250	0.12	GY-34560-09	6		GY-34560-29	12	
500	0.20	GY-34560-10	6		GY-34560-30	12	
1000	0.30	GY-34560-11	1		GY-34560-31	6	
2000	0.50	GY-34560-12	1		GY-34560-32	4	

Wide-Mouth Volumetric Flasks

Get easier sampling and aliquots

- Wide mouth allows for easier access for pipettes
- Class A for accurate dilutions; flasks 205-mL and under meet ASTM E288 standards
- Autoclavable



Capacity (mL)	Tolerance (±mL)	‡ Stopper no.	Closure handle color for PTFE stopper	Flasks with PTFE stopper			Flasks with glass stopper		
				Catalog number	Qty/cs	Price/cs	Catalog number	Qty/cs	Price/cs
5	0.08	13	Orange	GY-34558-30	6		GY-34558-60	6	
10				GY-34558-32			GY-34558-62		
20				GY-34558-34			GY-34558-64		
25				GY-34558-36			GY-34558-66		
50	0.1	16	Blue	GY-34558-38	6		GY-34558-68	6	
100				GY-34558-40			GY-34558-70		
200	0.2	19	Green	GY-34558-42	6		GY-34558-72	6	
250				GY-34558-44			GY-34558-74		
500				GY-34558-46			GY-34558-76		
1000	0.3	22	Yellow	GY-34558-48	1		GY-34558-78	1	
2000				GY-34558-50			GY-34558-80		

‡ Symbol used to designate interchangeable joints, stoppers, and stopcocks that comply with the requirements of Commercial Standard CS-21 published by NIST.

Brand 5660 Volumetric Flasks

No more worn off graduations

- Get permanent legibility and accuracy with etched red graduation
- Flasks are Class A and calibrated "to contain" for added accuracy
- Include F stopper
- Case quantities also available



Capacity (mL)	Tolerance (\pm mL)	F Stopper no.	Catalog number	Qty/pk	Price/pk
25	0.03	9	GY-34562-01	6	
50	0.05	9	GY-34562-02	6	
100	0.08	13	GY-34562-03	6	
200	0.10	13	GY-34562-04	6	
250	0.12	16	GY-34562-05	6	
500	0.20	19	GY-34562-06	6	
1000	0.30	22	GY-34562-07	1	
2000	0.50	27	GY-34562-08	1	

F Symbol used to designate interchangeable joints, stoppers, and stopcocks that comply with the requirements of Commercial Standard CS-21 published by NIST.

Brand 5642 Volumetric Flasks

No more broken stoppers

- High-density polyethylene stopper won't break if dropped
- Durable, Class A design
- Sharp, permanent graduation for precise dilutions



Capacity (mL)	Tolerance (\pm mL)	F Stopper no.	Catalog number	Qty/pk	Price/pk
25	0.03	9	GY-34561-04	6	
50	0.05	9	GY-34561-05	6	
100	0.08	13	GY-34561-06	6	
200	0.10	13	GY-34561-07	6	
250	0.12	16	GY-34561-08	6	
500	0.20	19	GY-34561-09	6	
1000	0.30	22	GY-34561-10	1	
2000	0.50	27	GY-34561-11	1	

Volumetric Flasks

Get accurate dilutions

- Calibrated "to contain"; 5-mL and larger meet Class A specifications†
- Include F stopper
- Autoclavable



Capacity (mL)	Tolerance (\pm mL)	F Stopper number	Catalog number	Qty/cs	Price/cs
1	0.02	9	GY-34528-00†	12	
2	0.02	9	GY-34528-02†	12	
5	0.02	9	GY-34528-04	12	
10	0.02	9	GY-34528-06	12	
25	0.03	9	GY-34528-08	12	
50	0.05	9	GY-34528-10	12	
100	0.08	13	GY-34528-12	12	
200	0.10	16	GY-34528-14	12	
250	0.12	16	GY-34528-16	12	
500	0.20	19	GY-34528-18	12	
1000	0.30	22	GY-34528-20	6	
2000	0.50	27	GY-34528-22	4	

†Class A precision standards do not apply to the 1- and 2-mL flasks (34528-00, -02).

F Symbol used to designate interchangeable joints, stoppers, and stopcocks that comply with the requirements of Commercial Standard CS-21 published by NIST.

Cell Culture Flasks, PS

Get better traceability

- Individually printed lot numbers and optional bar coded versions available
- View samples easier with clear virgin polystyrene design
- Gamma-irradiated, and certified nonpyrogenic and nontoxic



Culture area	Working volume	Total volume	Cap type	Catalog number	Qty/cs	Price/cs
25 cm ²	10 mL	30 mL	Plug seal	GY-01936-00	500	
			Vent	GY-01936-02	200	
			Phenolic	GY-01936-50	500	
75 cm ²	60 mL	250 mL	Plug seal	GY-01936-10		
			Phenolic	GY-01936-12	100	
			Vent	GY-01936-14		
75 cm ²	80 mL	200 mL	Phenolic	GY-01835-12	100	
			Vented	GY-01835-14		
			Plug seal	GY-01936-20		
150 cm ²	175 mL	450 mL	Vent	GY-01936-22	50	
			Phenolic	GY-01936-52		
			Phenolic	GY-01936-30		
175 cm ²	250 mL	600 mL	Vent	GY-01936-32	50	
			Plug	GY-01936-54	50	
			Plug	GY-01936-34†	84	

†Barcoded

Wait!

There's More at ColeParmer.com

Browse 100,000+ products plus find **Technical Resources** to help you choose

Flasks

Brand 4320 Boiling Flasks

Withstand expansion and shock for more durability

- Borosilicate glass with uniform wall thickness for added strength
- Normal working temperature of 446°F (230°C)

Capacity (mL)	⌘ joint	Cat. no.	Qty/pk	Price/pk	Cat. no.	Qty/cs	Price/cs
50	19/38	GY-34553-01	2		GY-34553-21	12	
100	24/40	GY-34553-02	2		GY-34553-22	12	
250	24/40	GY-34553-03	2		GY-34553-23	12	
500	24/40	GY-34553-04	2		GY-34553-24	12	
1000	24/40	GY-34553-05	1		GY-34553-25	12	
2000	24/40	GY-34553-06	1		GY-34553-26	6	
5000	45/50	GY-34553-07	1		GY-34553-27	4	
12,000	55/50	—	—	—	GY-34553-28	1	

⌘ Symbol used to designate interchangeable joints, stoppers, and stopcocks that comply with the requirements of Commercial Standard CS-21 published by NIST.

[GY-01199-00](#) Boiling stones, PTFE. One-pound (450 g) bottle



Square Volumetric Flasks

Maximize storage space

- Design allows 25% more space than standard volumetric flasks
- Calibrated “To Contain” and have marking area
- All are supplied with ⌘ glass stopper
- Compliance: ASTM Spec E288, Class A unserialized

Capacity		Tolerance (±mL)	⌘ Stopper no.	Qty/pk	Catalog number	Price/pk
mL	oz					
50	1¾	0.05	9	1	GY-34560-36	
100	3	0.08	13	1	GY-34560-38	
200	7	0.10	16	1	GY-34560-40	
250	8	0.12	16	1	GY-34560-42	
500	16	0.20	19	1	GY-34560-44	
1000	32	0.30	22	1	GY-34560-46	
2000	64	0.50	27	1	GY-34560-48	

⌘ Symbol used to designate interchangeable joints, stoppers, and stopcocks that comply with the requirements of Commercial Standard CS-21 published by NIST.



Volumetric Flasks, PMP

Ensure precise volumes

- Polymethylpentene (PMP) flasks are supplied with individual Class B calibrated ring markings
- Include polypropylene screw closure
- Withstand temperatures to 350°F (180°C)
- Autoclavable



Capacity		Qty/pk	Catalog number	Price/pk
mL	oz			
25	¾	1	GY-06110-32	
50	1½		GY-06110-34	
100	3		GY-06110-36	
250	8		GY-06110-38	
500	16	1	GY-06110-40	
1000	32		GY-06110-42	

Wide-Mouth Volumetric Flasks

Protect light-sensitive solutions

- Wide neck allows 50-mL pipette access
- Graduated to Class A tolerances for accuracy
- ⌘ glass stopper and large, permanent volume markings
- Autoclavable

Capacity		Tolerance (±mL)	⌘ Stopper no.	Qty cs	Catalog number	Price/cs
mL	oz					
5	⅜	0.08	13	6	GY-34557-60	
10	⅓	0.08	13	6	GY-34557-62	
20	⅝	0.08	13	6	GY-34557-64	
25	¾	0.08	13	6	GY-34557-66	
50	1¾	0.08	13	6	GY-34557-68	
100	3	0.10	16	6	GY-34557-70	
200	7	0.20	19	6	GY-34557-72	
250	8	0.20	19	6	GY-34557-74	
500	16	0.20	19	6	GY-34557-76	
1000	32	0.30	22	1	GY-34557-78	
2000	64	0.50	27	1	GY-34557-80	

⌘ Symbol used to designate interchangeable joints, stoppers, and stopcocks that comply with the requirements of Commercial Standard CS-21 published by NIST.

